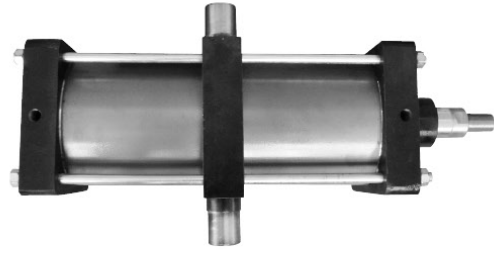
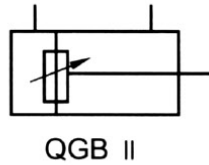
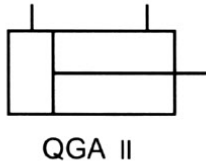


QGA II QGB II 系列气缸/QGA II QGB II series cylinder

图形符号 Picture symbol



特点 Features

设计采用“ISO”国际标准，新的缓冲结构和新的密封型式，性能先进可靠，寿命长久耐用。

QGB II带可调缓冲，QGA II无缓冲装置。活塞杆表面镀铬。

多种安装形式，使用安装方便，应用广泛。活塞运动速度50~500mm/s。

IOS international standard design, new cushion and sealing styles, rod surface chromed.

Advanced and reliable functions and long service life.

QGB type air cushioned and QGA type without cushion.

Various mounting styles, easy maintenance and multiple utilizations. Piston speed 50-500mm/s.

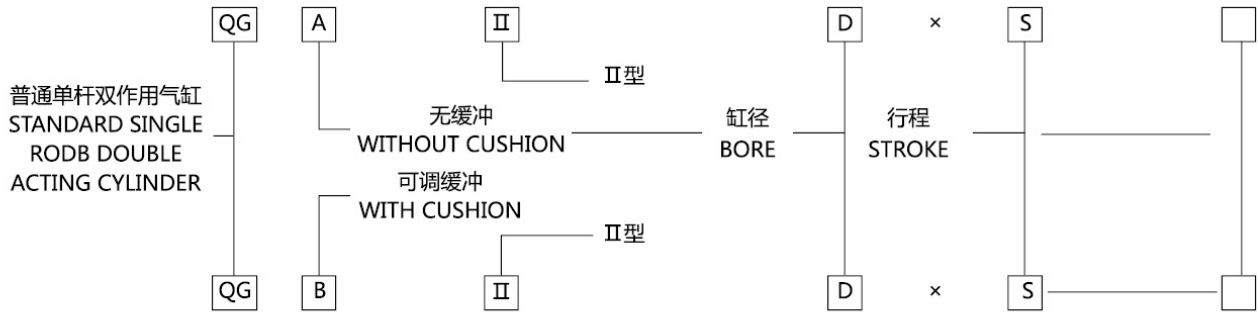
基本参数 Basic Parameters

气缸内径D(mm) BORE SIZE		32	40	50	63	80	100	125	160	200	250	320
工作压力(MPa) WORKING TEMPERATURE		0.15 ~ 1										
介质温度(°C) MEDIA TEMPERATURE		-25 ~ +80(在不冻结条件下) -25 ~ +80(NONFREEZING CONDITION)										
理论作用力 (以0.4MPa计算)N THEORETICAL APPLIED FORCE	推力 PUSHING FORCE	322	502	785	1246	2010	3140	4906	8038	12560	19625	32154
	拉力 PULLING FORCE	276	422	589	1050	1688	2819	4404	7253	11775	18086	29610
行程范围(mm) STROKE RANGE	QGB II	≥50 ≤500	≥50 ≤600	≥60 ≤600	≥60 ≤800	≥80 ≥1200	≥80 ≤1200	≥100 ≤3000	≥120 ≤3000	≥120 ≤3000	≥120 ≤3000	≥120 ≤3000
	QGA II	>0 ≤600	>0 ≤600	>0 ≤600	>0 ≤800	>0 ≤1200	>0 ≤1200	>0 ≤3000	>0 ≤3000	>0 ≤3000	>0 ≤3000	>0 ≤3000

注: 超出行程范围可协商加工

REMARKS: CONSULT WITH THE PRODUCER IN CASE OF SPECIAL STROKES

型号说明 Model Example



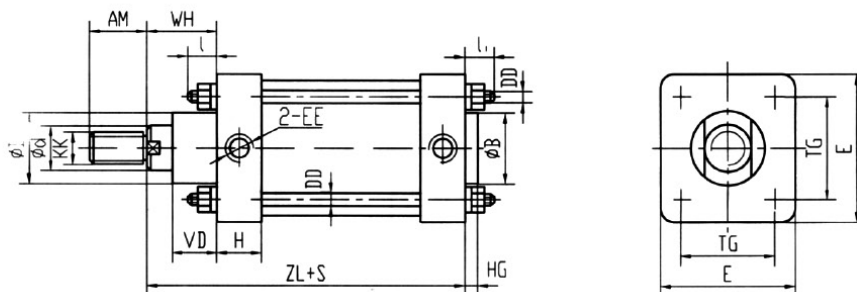
		MF1	MF2	MP4	MP2	MS1	MT4	TA	TB
安装形式	基本型(不标注)	前法兰式	后法兰式	尾部单耳式	尾部双耳式	脚架式	中间摆轴式	前摆轴	后摆轴

执行元件-气缸
Actuator Cylinder

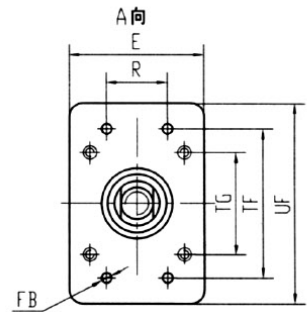
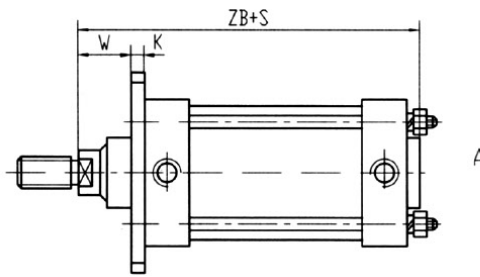
		MF1	MF2	MP4	MP2	MS1	MT4	TA	TB
MOUNTING STYLES	STANDARD TYPE (NOT STATED)	ROD SIDE FLANGE TYPE	HEAD SIDE FLANGE TYPE	ROD END SINGLE CLEVIS TYPE	ROD END DOUBLE CLEVIS TYPE	VERTICAL TO AXIS FOOT TYPE	INTERMEDIATE MOVABLE TRUNNION TYPE	BEFORE THE SWING	AFTER THE SWING

外形尺寸 Outline dimension(mm)

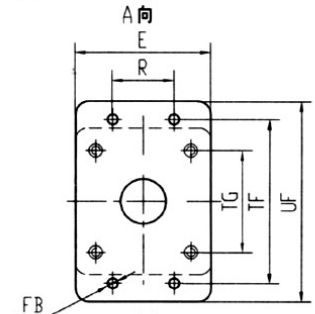
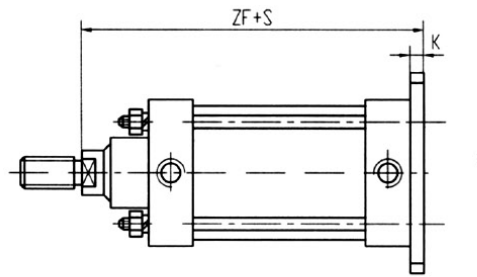
基本型 Standard Type



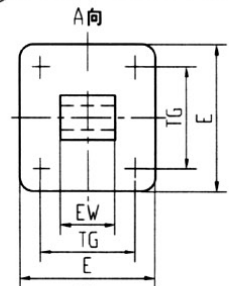
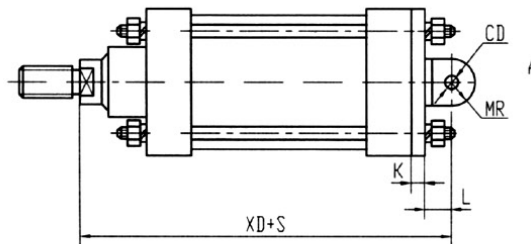
前法兰式MF₁
ROD SIDE FLANGE TYPE



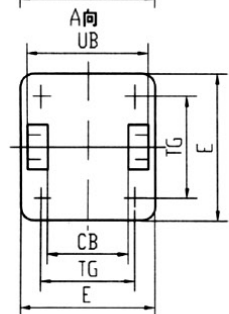
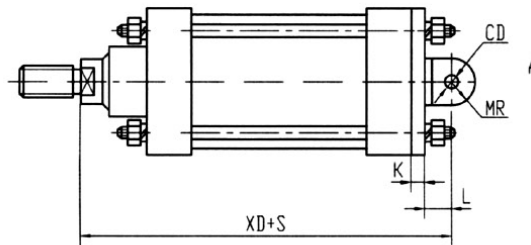
后法兰式MF₂
HEAD SIDE FLANGE TYPE



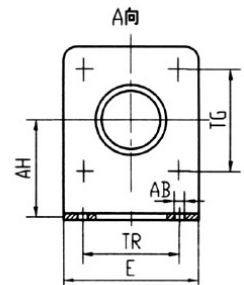
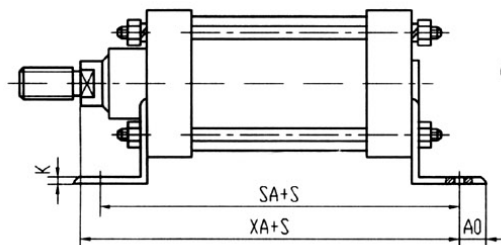
尾部单耳式MP₄
ROD END SINGLE CLEVIS TYPE



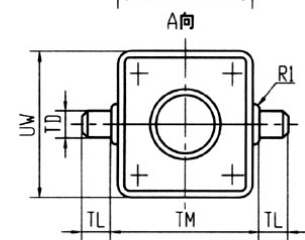
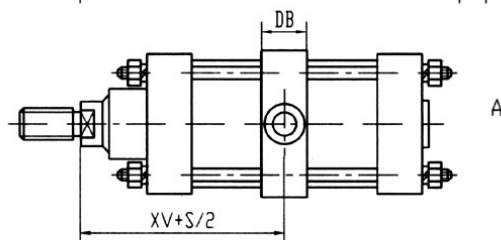
尾部双耳式MP₂
ROD END DOUBLE CLEVIS TYPE



脚架式MS₁
VERTICAL TO AXIS TYPE



中间摆轴式MT₄
INTERMEDIATE MOVABLE TRUNNION TYPE



尺寸表 Dimension table

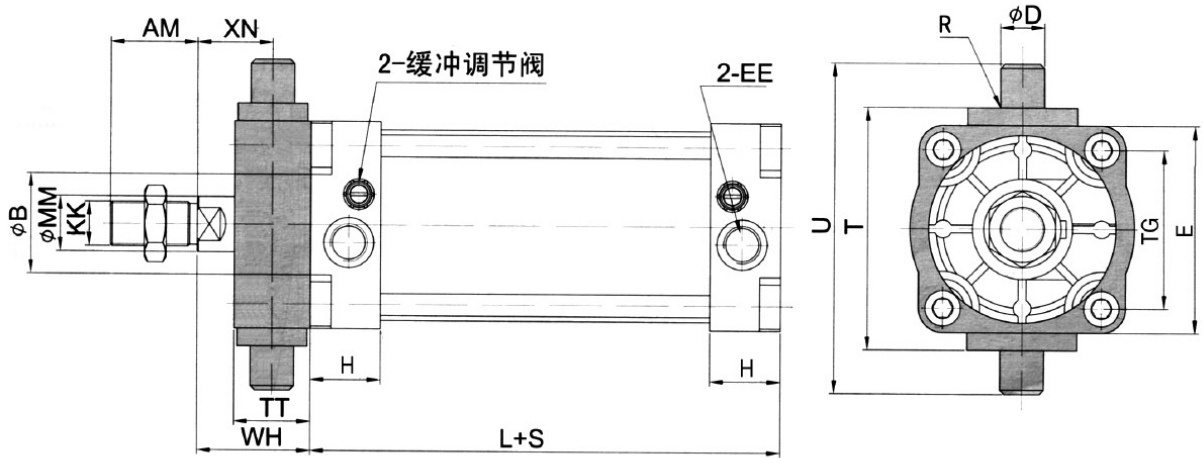
缸径 D	KK	Φd	ΦB	EE	DD	AM		WH		ZL		HG	TG	E	ZB		VD		
						BII	AII	BII	AII	BII	AII				BII	AII	BII	AII	
Φ32	M10×1.25	12	26	G1/8"	M5	22	14	26	22	120	94	3	34	48	123	93	17	10	15
Φ40	M12×1.25	16	34	G1/4"	M6	24	16	30	25	135	110	3	40	55	138	113	21	10	18
Φ50	M16×1.5	25	45	G1/4"	M6	32	22	35	25	145	110	3	48	65	148	113	26	10	18
Φ63	M16×1.5	25	45	G3/8"	M8	32	22	37	25	158	130	3	60	80	161	131	25	10	20
Φ80	M20×1.5	32	55	G3/8"	M10	40	28	46	29	174	134	4	75	100	178	138	33	14	26
Φ100	M20×1.5	32	55	G1/2"	M10	40	28	51	29	189	155	4	90	115	193	159	34	14	26
Φ125	M27×2	40	65	G1/2"	M12	54	36	65	34	225	175	4	112	145	229	179	40	14	33
Φ160	M36×2	50	80	G3/4"	M16	72	50	80	35	260	196	4	145	190	264	200	48	15	35
Φ200	M36×2	50	80	G3/4"	M16	72	50	95	40	275	210	5	180	225	280	215	55	20	35
Φ250	M42×2	70	110	G1"	M20	84	56	110	45	300	225	5	225	280	305	230	71	25	45
Φ320	M48×2	90	125	G1"	M24	96	63	125	54	335	254	5	280	350	340	259	85	25	53

缸径 Φ	KK		UF	TF	R	FB	K	AM		EW	CD	MR	L	XD		UB	CB		H	
	BII	AII						BII	AII					b12	H9		BII	AII	H12	BII
Φ32	16	12	80	64	32	7	10	130	100	26	10	10	12	142	112	45	26	22	16	
Φ40	20	15	90	72	36	9	10	145	120	28	12	12	15	160	135	52	28	25	20	
Φ50	25	15	110	90	45	9	10	155	120	32	12	12	15	170	135	60	32	25	20	
Φ63	25	13	125	100	50	9	12	170	140	40	16	15	20	190	160	70	40	30	25	
Φ80	30	13	155	126	63	12	16	190	150	50	16	15	20	210	170	90	50	35	25	
Φ100	35	13	180	150	75	14	16	205	171	60	20	20	25	230	196	110	60	35	30	
Φ125	45	14	215	180	90	16	20	245	195	70	25	25	30	275	226	130	70	40	35	
Φ160	60	15	270	230	115	18	20	280	216	90	30	30	35	315	251	170	90	45	40	
Φ200	70	15	315	270	135	22	25	300	235	90	30	30	35	335	270	170	90	45	40	
Φ250	80	15	385	330	165	26	30	330	255	110	40	40	45	375	300	200	110	49	44	
Φ320	90	19	470	400	200	33	35	370	289	120	45	45	50	420	339	220	120	55	50	

缸径 Φ	AH	TR	AB	SA		XA		AO	K ₁	UW	TD	R ₁	TL	TM	XV		DB	QGB II气缸重量kg
				BII	AII	BII	AII								BII	AII		
Φ32	32	32	7	142	116	144	114	11	4	46	12	1	12	50	73	56	25	1.16+0.0042s
Φ40	36	36	9	161	141	163	138	12	5	58	16	1.5	16	63	82.5	67.5	30	1.81+0.0055s
Φ50	45	45	9	170	145	175	140	15	6	70	16	1.5	16	75	90	67.5	30	2.81+0.0088s
Φ63	50	50	9	185	169	190	160	13	6	85	20	1.5	20	90	97.5	75.5	35	4.43+0.0106s
Φ80	63	63	12	210	187	215	175	19	8	105	20	1.5	20	110	110	81.5	35	8.14+0.0173s
Φ100	71	75	14	220	208	230	196	19	8	126	25	2	25	132	120	92	45	10.92+0.0244s
Φ125	90	90	16	250	231	270	220	25	8	155	25	2	25	160	145	104.5	45	19.56+0.0334s
Φ160	115	115	18	300	281	320	256	20	10	195	32	2	32	200	170	115.5	60	41.72+0.0581s
Φ200	135	135	22	320	310	345	280	30	12	240	32	2	32	250	185	125	60	59.98+0.0688s
Φ250	165	165	26	350	340	380	305	35	14	300	40	3	40	320	205	135	70	97.64+0.1049s
Φ320	200	200	32	390	380	425	344	35	16	380	50	3	50	400	230	154	80	173.99+0.2533s

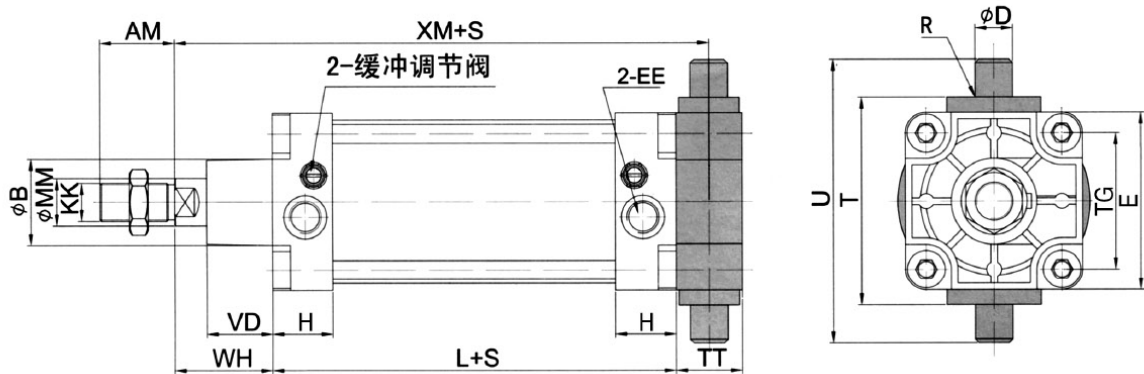
执行元件-气缸
Actuator Cylinder

TA前端轴销座型 QGB II 气缸外形尺寸



缸径	AM	D	EE	KK	L	R	T	TT	U	WH	XN
32	22	12	G1/8	M10×1.25	94	1	50	20	74	26	16
40	24	16	G1/4	M12×1.25	105	1.5	63	24	95	30	18
50	32	16	G1/4	M16×1.5	106	1.6	75	28	107	37	23
63	32	20	G3/8	M16×1.5	121	1.6	90	28	130	37	23
80	40	20	G3/8	M20×1.5	128	1.6	110	28	160	46	32
100	40	25	G1/2	M20×1.5	138	2	132	38	182	51	32
125	54	25	G1/2	M27×2	160	2	160	50	210	65	40
160	72	32	G3/4	M36×2	180	2.5	200	50	264	80	55
200	72	32	G3/4	M36×2	180	2.5	250	50	314	95	70
250	84	40	G1	M42×2	190	3.2	320	60	400	105	75
320	96	50	G1	M48×2	210	3.2	400	70	500	120	85

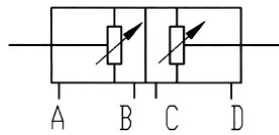
TB后端轴销座型 QGB II 气缸外形尺寸



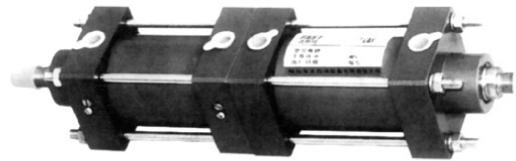
缸径	AM	D	EE	KK	L	R	T	TT	U	WH	XM
32	22	12	G1/8	M10×1.25	94	1	50	20	74	26	130
40	24	16	G1/4	M12×1.25	105	1.5	63	24	95	30	147
50	32	16	G1/4	M16×1.5	106	1.6	75	28	107	37	157
63	32	20	G3/8	M16×1.5	121	1.6	90	28	130	37	172
80	40	20	G3/8	M20×1.5	128	1.6	110	28	160	46	188
100	40	25	G1/2	M20×1.5	138	2	132	38	182	51	208
125	54	25	G1/2	M27×2	160	2	160	50	210	65	250
160	72	32	G3/4	M36×2	180	2.5	200	50	264	80	285
200	72	32	G3/4	M36×2	180	2.5	250	50	314	95	300
250	84	40	G1	M42×2	190	3.2	320	60	400	105	325
320	96	50	G1	M48×2	210	3.2	400	70	500	120	365

QGB II -H双活塞气缸/QGB II -H Double pistons cylinder

图形符号 Picture symbol



QGB II -H



特点 Features

※ 本产品是以两台QGB II系列相同缸径的气缸对接组合而成的双活塞系列气缸，两活塞行程可以相同，也可以不同。活塞运动方向相反。将一端活塞杆固定，可作为多位气缸，用途多样化。

※ 适于前法兰式(MF1)和脚架(MS1)安装形式。

※ 安装件尺寸与QGB II系列气缸相同。

This product is composed of two cylinders that have the same bore diameter. The stroke can be the same or not. The piston moves contrarily, if one points of the pistons rod is fixed, it can be used as multidigit cylinders and with divers use.

The form of mount is suitable for MF1 and MS1.

The size of the mount is the same as QGB II

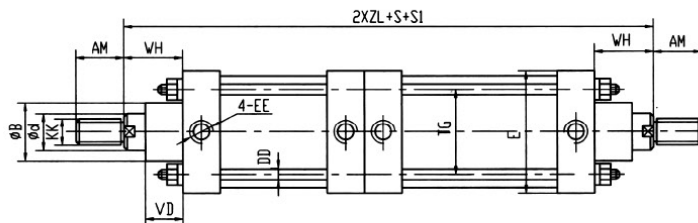
型号说明 Model expressing methods



示例 Example

缸径Φ80mm，行程S为200mm，S₁为300mm脚架式的双活塞气缸QGB II -H80×200×300-MS1

Clevis jointing of the double pistons cylinder (QGB II -H80×200×300-MS1), its bore is 80mm, its stroke is 200mm and its stroke1 is 300mm.



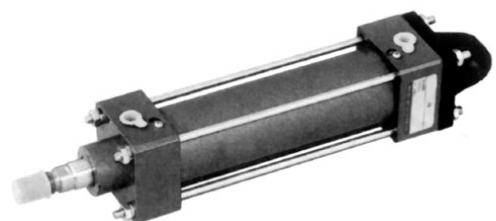
QGB II -R耐热气缸/QGB II -R Heat-resistant cylinder

※ 设计参数与安装尺寸符合“ISO”国际标准。

※ 密封件何用氟橡胶材料，耐高温，适于冶炼行业及高温应用场所。介质温度 -20°C~+200°C(在不冻结条件下)。

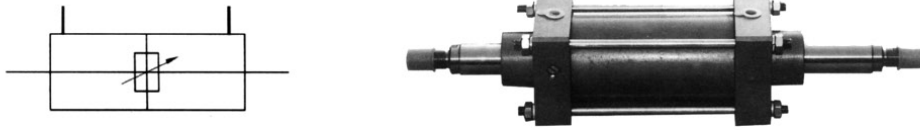
※ 安装形式与安装尺寸与QGB II系列气缸相同。

The design parameters and installing dimensions are suiting the ISO international standard. The sealing material is heat-resistant Viton, this series cylinder is suiting used in metallurgy, high-temperature situation,etc. Medium temperature: -20~+200°C(nonfreezing condition).



QGB II -L 双活塞杆气缸/QGB II -L Double piston rod cylinder

图形符号 Picture symbol



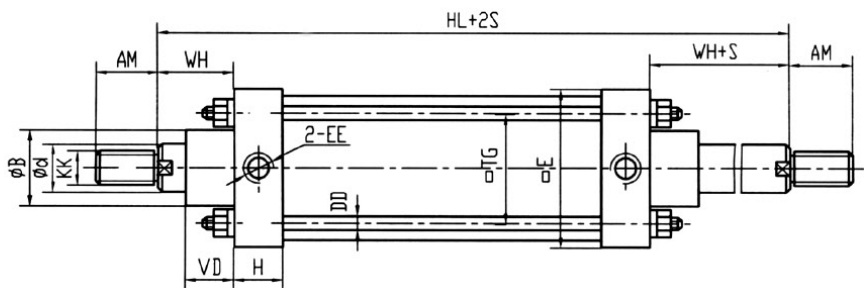
特点 Features

- ※ 本产品是以QGB II为基本系列的双活塞杆系列产品，即活塞两侧安装两根活塞杆，活塞双向作用，推力拉力相同(拉力)运动方向、速度、行程相同。
- ※ 适于前法兰(MF1)和脚架(MS1)安装形式。
- ※ This is the double piston rods series cylinder based on the QGB II basic series. There are two rods installing at the two sides of the piston. The piston is double-acting. The two cylinder rods have the same moving direction, speed, and stroke. And the pull equals to the push.
- ※ The form of mounting is suitable for MF1 and MS1.

型号说明 Model expressing methods



外形及安装尺寸 Appearance and installing dimensions



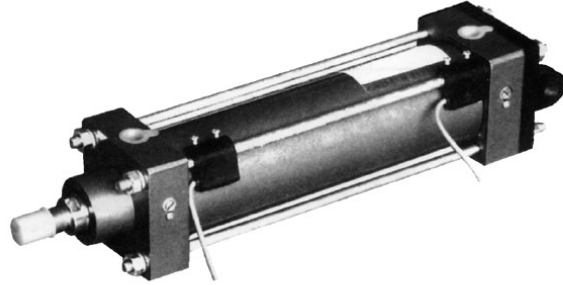
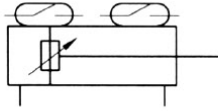
※ 其余尺寸及与QGB II相同/The other dimensions are the same as QGB II

规格 Specification	32	40	50	63	80	100	125	160	200	250	320
HL	146	165	181	195	220	240	289	339	370	410	460

QGB II -K 磁性开关气缸

QGB II -K type cylinder with solenoid switches

图形符号 Picture symbol



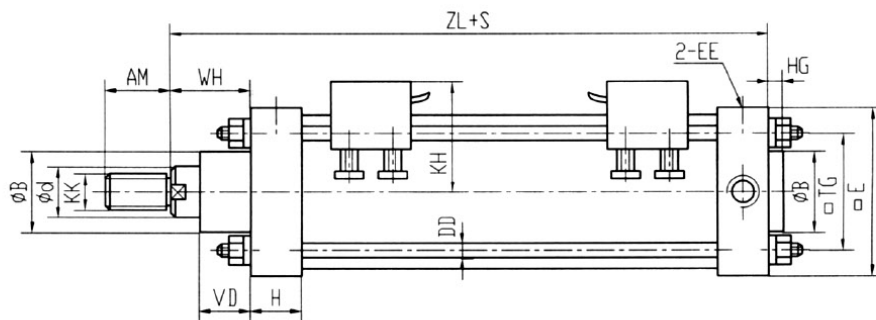
特点 Features

- ※ 采用磁性活塞与CK系列磁感应发讯器组合应用新技术，实现气缸往复自动换向。环境温度-20℃~+60℃（在不冻结条件下）
- ※ 安装尺寸及安装形式与QGB II气缸相同。
- ※ With the new technology of combining magnetic pistons the CK sensors, this model realizes automatically the reciprocating action of the cylinder. The ambient temperature ranges from -20℃ to +60℃ at the non-freezing conditions.
- ※ Mounting dimensions and styles are the same as the QGB II type.

型号说明 Model expressing methods



外形及安装尺寸 Appearance and installing dimensions



※ 其余尺寸及与QGB II气缸相同/The other dimensions are the same as the QGB II type.

规格 Specification	32	40	50	63	80	100	125	160
KH	62	67	67	74	85	93	105	118

